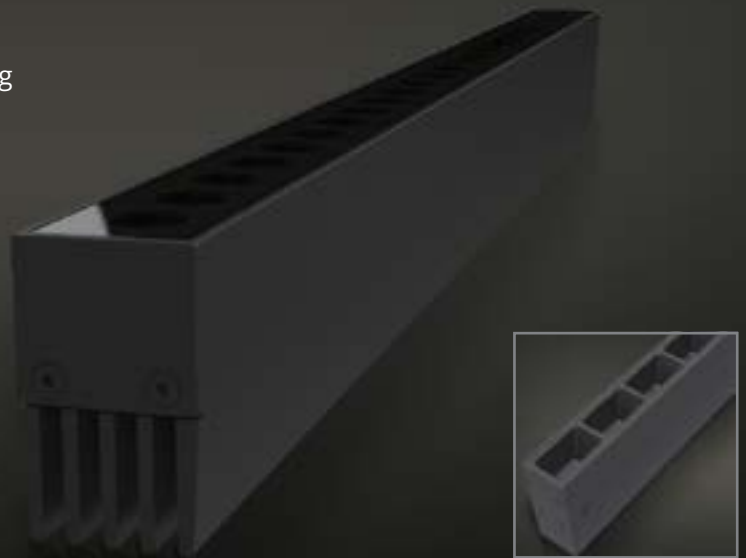


# LINEAR SLIM PH DC

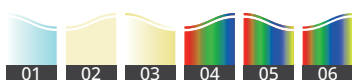
A new cost competitive fixture designed for grazing applications, Superb optic design offers smooth mixture of colours and creates a variety of moods, A fast installation is achieved with quick-plugs, Uniform lighting output by 2 steps or 3 steps bin selection is available upon request.



## SPECIFICATION

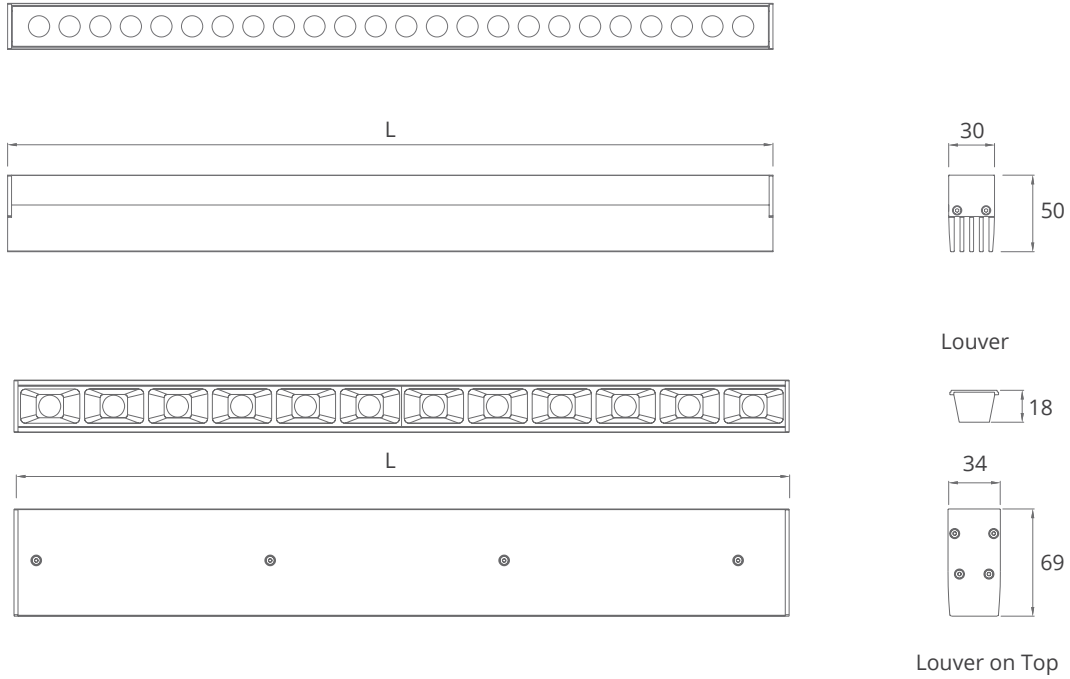
<b>MODEL</b>	HIGH WAVE LINEAR SLIM PH DC
<b>OPERATING VOLTAGE</b>	24V DC, 48V DC
<b>POWER CONSUMPTION</b>	50W/990mm
<b>LED TYPE</b>	High Power LED
<b>COLOUR TEMP OPTION</b>	2700K 3000K, 4000K, 5000K, 6500K RGB, RGBW
<b>CRI</b>	90min, 80min
<b>PRODUCT EFFICIENCY</b>	75lm/W@3000K
<b>FULL WIDTH AT HALF MAXIMUM (OPTICS)</b>	8°, 8°*15°, 8°*30°, 8°*50°, 20°*40°, 30°, 40°
<b>MATERIAL</b>	Aluminum + Tempered Glass
<b>AMBIENT OPERATING TEMPERATURE</b>	-20°C ~ +55°C
<b>LUMEN MAINTENANCE</b>	50,000 hours/L70 at 25°C
<b>DIMENSIONS</b>	990(L)*30 (W)*50 (H)mm 990(L)*34 (W)*69 (H)mm (Louver on Top) 255/500/745/1235mm available
<b>CABLE LENGTH</b>	300mm
<b>CONTROL SYSTEM</b>	ON/OFF, DMX/RDM, 0-10V Dim
<b>MOUNTING TYPE</b>	Surface
<b>IP RATING</b>	IP66

## FEATURES & OPTIONS



- |                |                   |
|----------------|-------------------|
| 01. CW         | 10. RAL9005       |
| 02. NW         | 11. IP66          |
| 03. WW         | 12. ANTI-SALINE   |
| 04. DW         | 13. POLAR         |
| 05. RGB        | 14. DMX           |
| 06. RGBW       | 15. RFU           |
| 07. RAL9003    | 16. RDM           |
| 08. GRMEN GREY | 17. DALI          |
| 09. RAL7016    | 18. WIRELESS DATA |

**DIMENSIONS**



Leader Cable



Jumper Cable



\*all units are in mm

**OPTIC SELECTION**



LED	Lumens	Watts	Efficacy
WHITE	3053.50	50.10	60.95

CenterBeamLux	Illuminance at Distance
4569.49 lx	05.0 m
1142.37 lx	10.0 m
507.72 lx	15.0 m
285.59 lx	20.0 m
182.78 lx	25.0 m
126.93 lx	30.0 m

▪ Ver. Spread: 7.5°    ▪ Horiz. Spread: 7.5°



LED	Lumens	Watts	Efficacy
WHITE	3744.00	49.50	75.63

CenterBeamLux	Illuminance at Distance
1191.53 lx	05.0 m
297.88 lx	10.0 m
132.39 lx	15.0 m
74.47 lx	20.0 m
47.66 lx	25.0 m
33.10 lx	30.0 m

▪ Ver. Spread: 6.5°    ▪ Horiz. Spread: 48.5°

**3000K**